



FITTING INSTRUCTIONS FOR

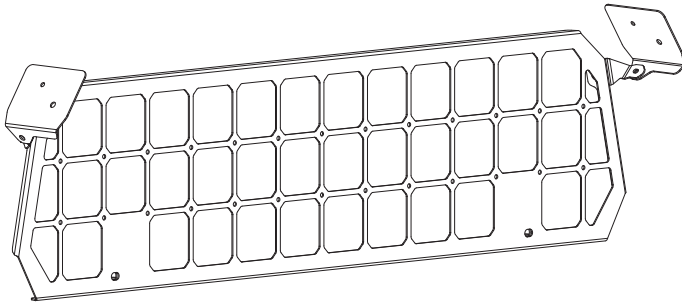
Light Cargo Barrier

SKU

KS0789

COMPATIBILITY

INEOS Grenadier 1924 & Station Wagon



Included contents

QTY	COMPONENT	QTY	COMPONENT
1	Light Cargo Barrier	4	Headrest Bushing
2	Headrest Bracket	2	M10 x 20 Black Plastic Knob
2	Mounting Bracket (LHS & RHS)	2	M10 x 20 Button Head Cap Screw
2	Barrier Bracket Short (LHS & RHS)	2	M10 x 30 x 2.5 DIN Flat Washer
2	Barrier Bracket Long (LHS & RHS)	2	M8 x 35 Button Head Cap Screw
2	Handle Spacer Long	2	M8 x 24 x 2.0 DIN Washer
2	Handle Spacer	2	M6 x 16 Flanged Bolt
2	O-Ring Large	4	M6 x 18 x 1.5 Flat Washer
2	O-Ring Small	2	M6 x 40 Button Head Socket Screw



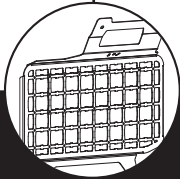
Time

30 minutes / Half a beer

For further information contact KAON on **07 3180 1470** or info@kaon.com.au

It all works together.

All our storage products work together, but there is a certain order to installing. Let's work out the best order for your setup, shall we?



Are you installing a Side Molle Panel?

YES

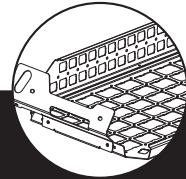
Assemble the Molle Panel as per it's instructions. Now's the time to mount any additional accessories to the Molle as well.

Are you installing other KAON Storage Products?

NO

Complete the Molle Panel as per it's instructions.

NO



Are you installing a Rear Roof Shelf?

YES

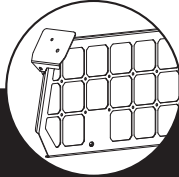
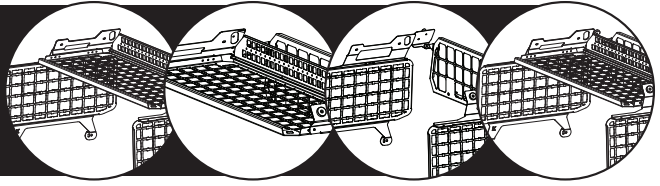
Follow the Rear Roof Shelf fitting guide. Finish installing with the Side Molle Panels if not installing other products.

Are you installing other KAON Storage Products?

NO

That's it, you're done!

YES



Are you installing a Light Cargo Barrier?

NO

YES

The last piece of the puzzle! Follow the instructions for the Light Cargo Barrier. Complete the install of all interior storage products.

Are you installing other KAON Storage Products?

YES

YES

NO

That's it, you're done!

With the foundation in place, it's time to mount any other accessories, such as a Cargo Divider, Travel Buddy, etc. Have fun making it your own.

With your setup order sorted, let's get to the good part: installing. →

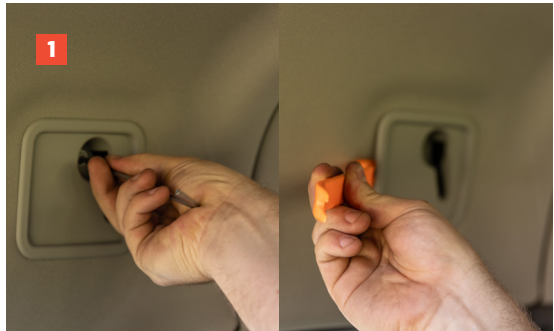
Bolt Torque

DIAMETER (mm)	5mm	6mm	8mm	10mm	12mm
NEWTON-METRES (Nm)	5 Nm	9 Nm	22 Nm	44 Nm	77 Nm

Let's get to work.

Preparing the Vehicle

1. First up, let's reveal the vehicle's rear mounting points. Using a pry tool and an allen key, remove the factory plastics in the vehicle's headliner.



Preparing the Barrier Mounting Bracket

2. If you're installing the Light Cargo Barrier in conjunction with the Standalone Shelf or Molle Panels, ensure you follow the installation order on page 2, before proceeding here.

If you're installing a Standalone Shelf in any combination with the Light Cargo Barrier, skip to step 11 now.

3. Thread the M8 x 35 bolt and washer through the lower, larger bolt hole in the mounting bracket. Next, thread the M6 x 40 bolt and washer through the upper bolt hole in the bracket.



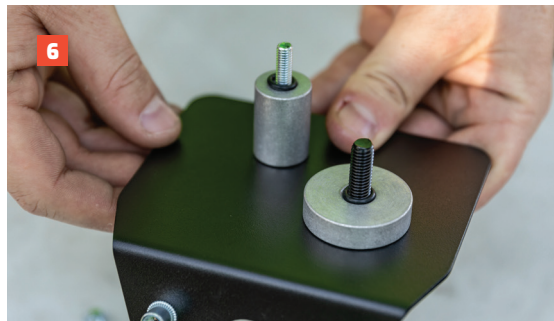
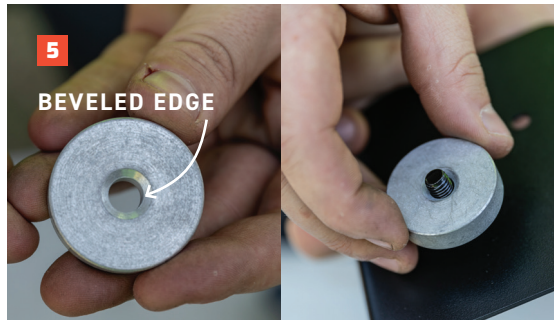
Preparing the Barrier Mounting Bracket cont.

- 4. If you're installing the Cargo Barrier with the Molle Panels:** the Molle's upper mounting bracket will need to sit underneath the barrier's mounting bracket. Thread the M6 and M8 bolt and washer through both brackets with the Cargo Barrier mounting bracket on top, as pictured.



Thread an M8 bolt and washer supplied in the Molle Panel kit, in the bolt hole on the other end of the Molle's upper mounting bracket.

- 5.** Thread the supplied spacers over each bolt. You will notice that one side has a beveled inside edge, as pictured. Ensure this edge is facing outward from the bracket. The long spacer will be placed over the M6 bolt, and the shorter spacer over the M8 bolt.
- 6.** Place the small o-ring over the M6 bolt, and the large o-ring over the M8 bolt. Push down so they sit within the beveled edge of the spacer. This will help to hold everything securely.
- 7.** With the hardware fixed to the mounting brackets, position them over the vehicle's captive mounts so that the nutsert is toward the front of the vehicle. Tighten all bolts until they are secure.



Finishing the Molle Panel Installation

8. If you're installing the Molle Panels, proceed with this section to finish their installation. If not, skip this section and begin assembling the Cargo Barrier.
9. Use the factory tie down points to attach the lower mounting brackets below the window. Ensure that the tie down point is oriented correctly in the opening on the bracket.
10. Using a torx bit, tighten the bolts until secure.



Assembling the Cargo Barrier

11. Two different lengths of barrier bracket have been supplied for the Cargo Barrier, depending on your seat positioning. Check your seat's orientation to determine which you'll need. If forward, use the longer bracket, and if rearward, use the shorter bracket.
12. Attach the barrier bracket to the barrier using the M10 knobs. There is a small notch in the passenger side bracket, as pictured, to differentiate left from right.



Installing the Cargo Barrier

13. Tilt the seats slightly forward and remove the head rest. Slide on the head rest brackets. With the seats still tilted, align the head rest pins with the holes and re-install it with the bracket in place. Return the seats to their usual upright position.
14. Position the main barrier against the head rests. The flanged edge on the barrier should be directed forwards, and the warning stickers should be visible from the rear of the vehicle.
15. Loosely secure it to the head rest brackets using the M10 domed head bolt and M10 washer.
16. Attach the barrier bracket to the mounting bracket nutsert using the M6 bolt and washer.

Please note: if you're installing in conjunction with a Standalone Shelf, attach the barrier bracket to the nutsert on the shelf mounting bracket.

17. If you're installing a Standalone Shelf in conjunction with the Light Cargo Barrier, proceed to step 18 to finish the shelf install.

If not, tighten all the bolts – and that's it, you're done! You can now hit the road with peace of mind knowing that your gear is secure.



Finishing the Standalone Shelf Installation

18. With the brackets up, it's time to install the shelf itself. Position the shelf by lifting and angling it upwards, until it rests on the lip of the mounting bracket. This lip will support the shelf while the install is completed.
19. The shelf position is adjustable and can be moved forward or backward. Once you've determined the right position, align the bolt holes and use the M6 bolts and nuts to secure the shelf to the mounting bracket.
20. Tighten all the bolts until secure.
21. There are two blanking plates supplied to fill in the empty spaces in the mounting bracket. Simply push into position, as pictured.
22. That's it! Your interior storage system is now set up, and ready to customise to your needs.



NOTICE

This barrier has not been tested to Australian Standards, and is intended as a pet barrier or for use when off-road.



Local Knowledge & Assistance

We know half the fun of building your dream 4x4 is getting your hands dirty. But we also know that sometimes, things don't go to plan. If in the pursuit to build the ultimate setup you find yourself off-track, we're here to help you get unstuck.

For further information call 07 3180 1470 or email info@kaon.com.au

Disclaimer: The products sold by KAON should not be modified, and are for use only on the vehicles specifically stated. KAON will not be liable for any damages arising out of the use or misuse of its products. It is the customers responsibility to ensure the products are safely and properly used and installed. KAON consistently seeks to improve its products and reserves the right to make changes to any product.