



FITTING INSTRUCTIONS FOR

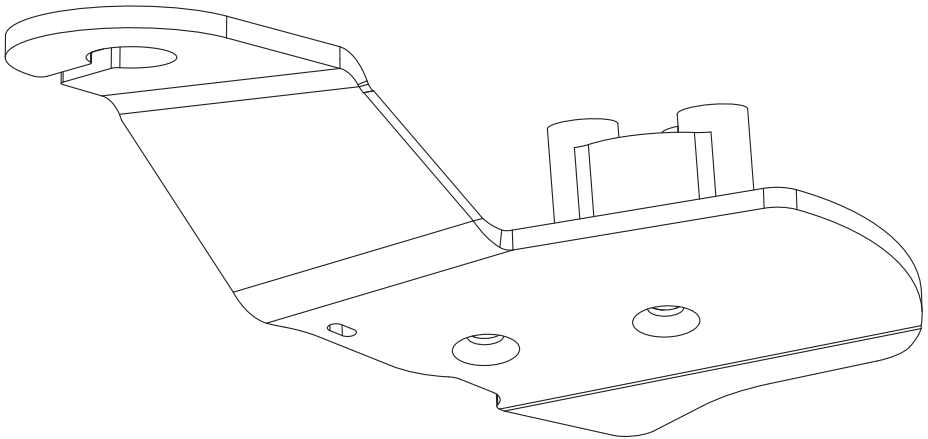
Side Mirror Antenna Mount (LHS)

SKU

KS0803

COMPATIBILITY

Toyota HiLux N80, Fortuner



Included contents

QTY	COMPONENT	QTY	COMPONENT
1	Antenna Mount Bracket	2	M6 x 16 Countersunk Socket Head Screw
1	Antenna Mount Body	3	M5 x 40 Socket Head Cap Screw
2	Cable Tie		



Time

1 Hour / 1 Beer

Scan the **QR code** to watch the video installation guide,
or for further information contact KAON on **07 3180 1470** or info@kaon.com.au



Bolt Torque

DIAMETER (mm)	5mm	6mm	8mm	10mm	12mm
NEWTON-METRES (Nm)	5 Nm	9 Nm	22 Nm	44 Nm	77 Nm

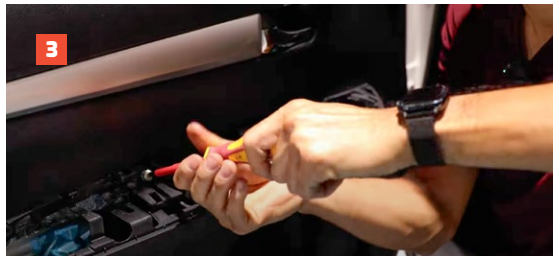
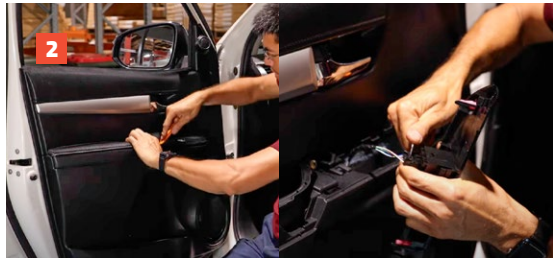
Let's get to work.

Preparing the Vehicle

1. There are two ways to install this antenna mount. The option we recommend is to remove the mirror and route the antenna cabling through the door panel into the cabin. This will create the cleanest installation of the antenna, and will be covered in these instructions.

A simpler but less concealed method is to install the bracket to the mirror without removing it from the vehicle, and then run the cable through the grommets in the A-pillar. If installing this way, ensure that tape is applied underneath the mirror to protect the vehicle's paint.

2. Start by removing both pieces of trim on the vehicle's arm rest, using a trim tool. Detach both the clip and the power windows switch. Set aside.
3. Loosen and remove the two factory bolts in the arm rest. Set aside.
4. Pop out the small panel backing of the handle using the trim tool. Set aside.
5. Loosen and remove the factory bolt in the handle. Set aside.
6. You will now be able to fully remove the door trim panel. Ensure that the handle and lock is unclipped from the door trim.



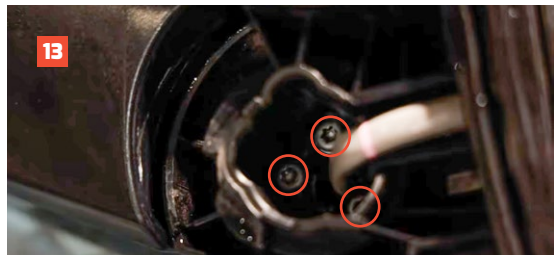
Preparing the Vehicle cont.

7. Remove the interior mirror trim and disconnect the speaker.
8. Loosen and remove the three factory M6 bolts holding the mirror in place. Take care to ensure they don't fall in the door cavity. Ensure that you support the mirror during this process so it does not fall.
9. Before removing the mirror from the vehicle, mark the position by outlining the centre opening.
10. Unplug the mirror's power cable from the door.
11. Remove the mirror by pulling the mirror and exterior plastic trim from the exterior side of the door.



Preparing the Vehicle's Mirror

12. Use a trim tool to remove the trim on the mirror's base.
13. Remove the three factory bolts surrounding the mirror's cable.
14. Using a 9.5mm drill bit, drill a hole in the exterior plastic trim inside the bounds of the position marked in step 10. The antenna cable will be run into the vehicle through this opening.



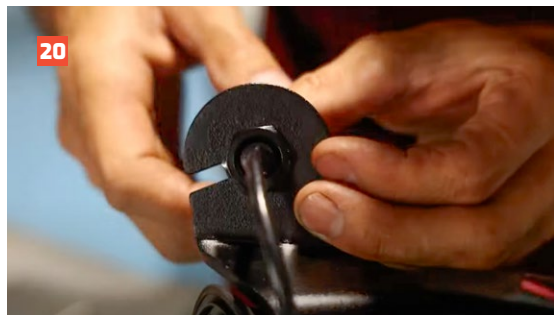
Installing the Antenna Mount Body

15. Place the antenna mount body in the socket as pictured, so that the bolt holes align, and secure using the three provided M5 bolts.
16. Tighten the bolts until secure.
17. Run the antenna cable through the mirror, in the same direction as the mirror's power cable. Pull through about three quarters of the antenna cable's length.



Installing the Antenna

18. Place the antenna mount bracket over the antenna mount body.
19. You will notice a small notch in the antenna mount bracket, to hold the antenna cable in place. Ensure that the cable is running through the notch.
20. Place the antenna through the slotted opening in the bracket, and secure at the base by threading on the nut.
21. Pull through the antenna cable until the excess length is gone.



Installing the Antenna cont.

- 22. Attach the antenna cable to the bracket using a small cable tie, and trim the end.
- 23. Bolt the bracket to the mirror using the provided M6 bolts.
- 24. Torque the bolts until secure and tighten the nut on the base of the antenna.



Reattaching the Mirror

- 25. Run the antenna cable through the drilled hole in the exterior plastic trim.
- 26. Reattach the exterior plastic trim to the vehicle's mirror, ensuring that all cables are running correctly through and are unimpeded by the plastic.
- 27. Feed the antenna cable and mirror cable back into the vehicle through the same opening.



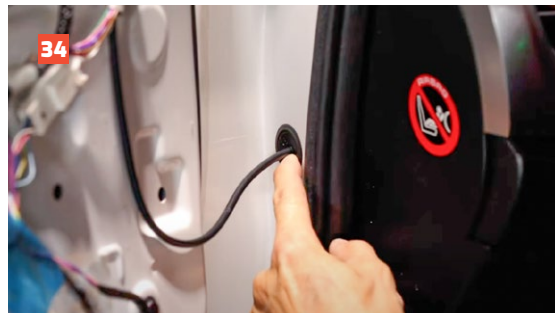
Reattaching the Mirror cont.

28. Reattach to the vehicle using the factory M6 bolts, once again taking care to ensure that they don't fall in the door cavity. Torque the bolts until tight.
29. Reattach the mirror power cable to the plug in the door cavity.
30. Using a small cable tie, secure the antenna and mirror together in the interior side of the door so they do not chafe. Trim the end.



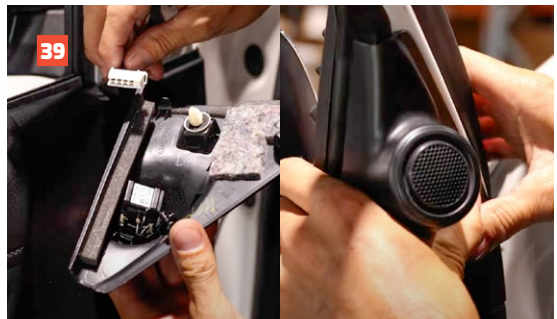
Running the Antenna Cable

31. You will notice there are two circular grommets in the inside edge of the vehicle's door. The lower of the two will be used to run the antenna cable into the vehicle's cabin.
32. Drill a 9.5mm hole in the centre of the lower grommet, and put back into the place.
33. Feed the antenna cable through the grommet and into the vehicle's cabin.
34. We recommend using a silicone sealant around the drilled opening of the grommet and antenna cable to prevent water or dust getting into the cabin. It is also best to run the cable slightly with a slight drop that prevents water run off being directed to the opening.



Finishing the Installation

35. Now you can route your cable!
We'll leave that part up to you, as it will depend on where you want your radio.
36. With the antenna cable in place, it's time to reattach the door trim to the vehicle. Start by feeding the handle and the lock back into the door trim and clip into place.
37. Reattach the door trim and reconnect the power window control through the arm rest. Secure to the door using the three factory bolts.
38. Replace all handle and arm rest trim.
39. Reconnect the speaker to the mirror's interior trim and reattach to the vehicle.
40. Push on the edges of the door trim to ensure that it is fully locked in place.
41. That's it, you're done!





Local Knowledge & Assistance

We know half the fun of building your dream 4x4 is getting your hands dirty. But we also know that sometimes, things don't go to plan. If in the pursuit to build the ultimate setup you find yourself off-track, we're here to help you get unstuck.

For further information call 07 3180 1470 or email info@kaon.com.au

Disclaimer: The products sold by KAON should not be modified, and are for use only on the vehicles specifically stated. KAON will not be liable for any damages arising out of the use or misuse of its products. It is the customers responsibility to ensure the products are safely and properly used and installed. KAON consistently seeks to improve its products and reserves the right to make changes to any product.