



FITTING INSTRUCTIONS FOR

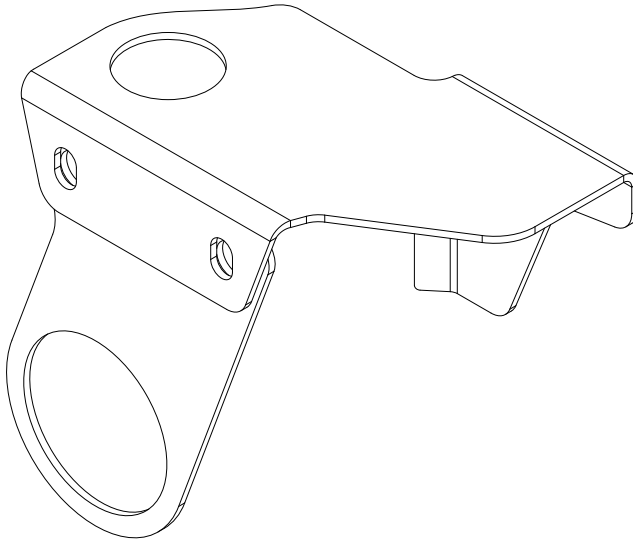
# Radiator Hose Protector Guard

SKU

**KS0856**

COMPATIBILITY

**Toyota Prado 150 3L 1KD**



## Included contents

QTY	COMPONENT
1	Top Bracket
1	Side Bracket
2	M5 x 10 Countersunk Socket Head Screw
2	M5 Dress Washer



**Time**

2 minutes / Sip of Beer

Scan the **QR code** to watch the video installation guide,  
or for further information contact KAON on **07 3180 1470** or [info@kaon.com.au](mailto:info@kaon.com.au)



## Bolt Torque

DIAMETER (mm)	5mm	6mm	8mm	10mm	12mm
NEWTON-METRES (Nm)	5 Nm	9 Nm	22 Nm	44 Nm	77 Nm

# Let's get to work.

---

## Installation

1. Pop the bonnet and locate the bracket's mounting position on the radiator.
2. Push the side bracket over the side spigot and into position.
3. Position the top bracket by pushing the bent vertical tab into the recess at the back of the radiator, and threading the hole in the bracket over the top plastic spigot.



---

## Installation cont.

4. Align the bolt holes on both brackets and secure using the hardware supplied.
5. Square up the brackets and tighten both screws to the recommended torque settings.
6. That's it, you're done!  
You can now change your battery with peace of mind that your radiator is protected.





## **Local Knowledge & Assistance**

We know half the fun of building your dream 4x4 is getting your hands dirty. But we also know that sometimes, things don't go to plan. If in the pursuit to build the ultimate setup you find yourself off-track, we're here to help you get unstuck.

**For further information call 07 3180 1470 or email [info@kaon.com.au](mailto:info@kaon.com.au)**

Disclaimer: The products sold by KAON should not be modified, and are for use only on the vehicles specifically stated. KAON will not be liable for any damages arising out of the use or misuse of its products. It is the customers responsibility to ensure the products are safely and properly used and installed. KAON consistently seeks to improve its products and reserves the right to make changes to any product.