

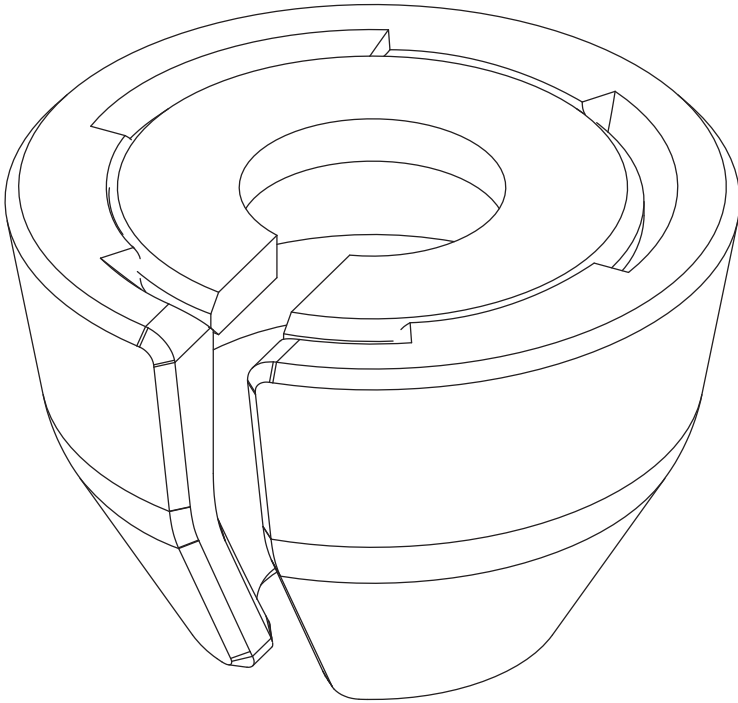


FITTING INSTRUCTIONS FOR


Antenna Cable Shroud

SKU

KS0858



Included contents	
QTY	COMPONENT
1	Antenna Shroud Washer
1	Antenna Shroud Body

 Time	2 minutes/ Sip of beer
---	------------------------

For further information contact KAON on **07 3180 1470** or info@kaon.com.au

Bolt Torque

DIAMETER (mm)	5mm	6mm	8mm	10mm	12mm
NEWTON-METRES (Nm)	5 Nm	9 Nm	22 Nm	44 Nm	77 Nm

Let's get to work.

Installation

1. Unfasten the nut at the base of the mounted antenna.
2. Push the antenna cable through the slot on the washer.
3. Sandwich the washer between the nut and the mount and refasten until secure.



Installation cont.

4. Push the antenna cable through the slot in the cable shroud body, and clip the body in place over the nut.
5. That's it, you're done! You've now got a sleek and discreet finish for your mounted antenna.





Local Knowledge & Assistance

We know half the fun of building your dream 4x4 is getting your hands dirty. But we also know that sometimes, things don't go to plan. If in the pursuit to build the ultimate setup you find yourself off-track, we're here to help you get unstuck.

For further information call 07 3180 1470 or email info@kaon.com.au

Disclaimer: The products sold by KAON should not be modified, and are for use only on the vehicles specifically stated. KAON will not be liable for any damages arising out of the use or misuse of its products. It is the customers responsibility to ensure the products are safely and properly used and installed. KAON consistently seeks to improve its products and reserves the right to make changes to any product.